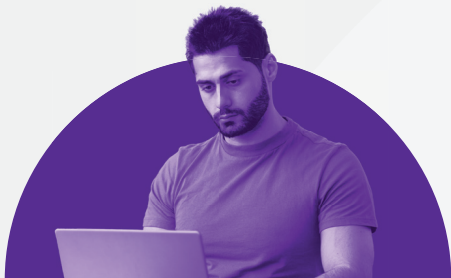




FIND COMMUNITY

With over 18,000 LGBTQIA+ resources nationwide, find what you're looking for.

LGBTnearME.org



VOLUNTEER

For just a few hours a week you can make a difference in the lives of countless members of the LGBTQIA+ community.

We are always looking for caring, non-judgmental listeners.

Positions available remotely.

LGBThotline.org/volunteer



CONTACT

Mailing Address:

**LGBT National Help Center
2261 Market Street, #296
San Francisco, CA 94114**

Office: 415-355-0003

Email: Help@LGBThotline.org



[lgbt_national_hotline](https://www.instagram.com/lgbt_national_hotline)



[LGBTnationalhelpcenter](https://www.facebook.com/LGBTnationalhelpcenter)



[LGBTNatlHelpCtr](https://twitter.com/LGBTNatlHelpCtr)



DONATE

We are almost entirely funded by individuals like you, who understand the importance of our work. Your generosity makes a huge difference!

LGBThotline.org/donate



**PROVIDING
VITAL
SUPPORT FOR
THE
LESBIAN
GAY
BISEXUAL
TRANSGENDER
QUEER
& QUESTIONING
COMMUNITY**



LGBThotline.org



Since 1996, the LGBT National Help Center has been dedicated to providing vital care & connections for the LGBTQIA+ community across the United States and Canada.

Through our programs our LGBTQIA+ volunteers provide highly trained and caring support to those with issues or concerns dealing with sexuality and/or gender identity, including coming out issues, discrimination, anxiety, fears of isolation, questions about HIV/AIDS and safer-sex practices, and so much more.

YOU SHOULD NEVER HAVE TO FEEL ALONE!

Our LGBT National Hotlines:

LGBT NATIONAL HOTLINE: 888-843-4564

Peer support, vital resources, and information for the entire LGBTQIA+ community.

COMING OUT SUPPORT HOTLINE: 888-688-5428 (888-OUT-LGBT)

A safe space to discuss issues dealing with coming out to yourself and others.

YOUTH TALKLINE: 800-246-7743

Ages 25 years old and younger.

SENIOR HOTLINE: 888-234-7243

Ages 50 years old and older.

Our Online Programs:

One-To-One Online Chat: LGBThotline.org/chat

One-to-one text-based peer support.

LGBT Youth Chat Rooms: LGBThotline.org/youthchatrooms

Moderated for LGBTQIA+ youth to find friends, community, and support from one another.